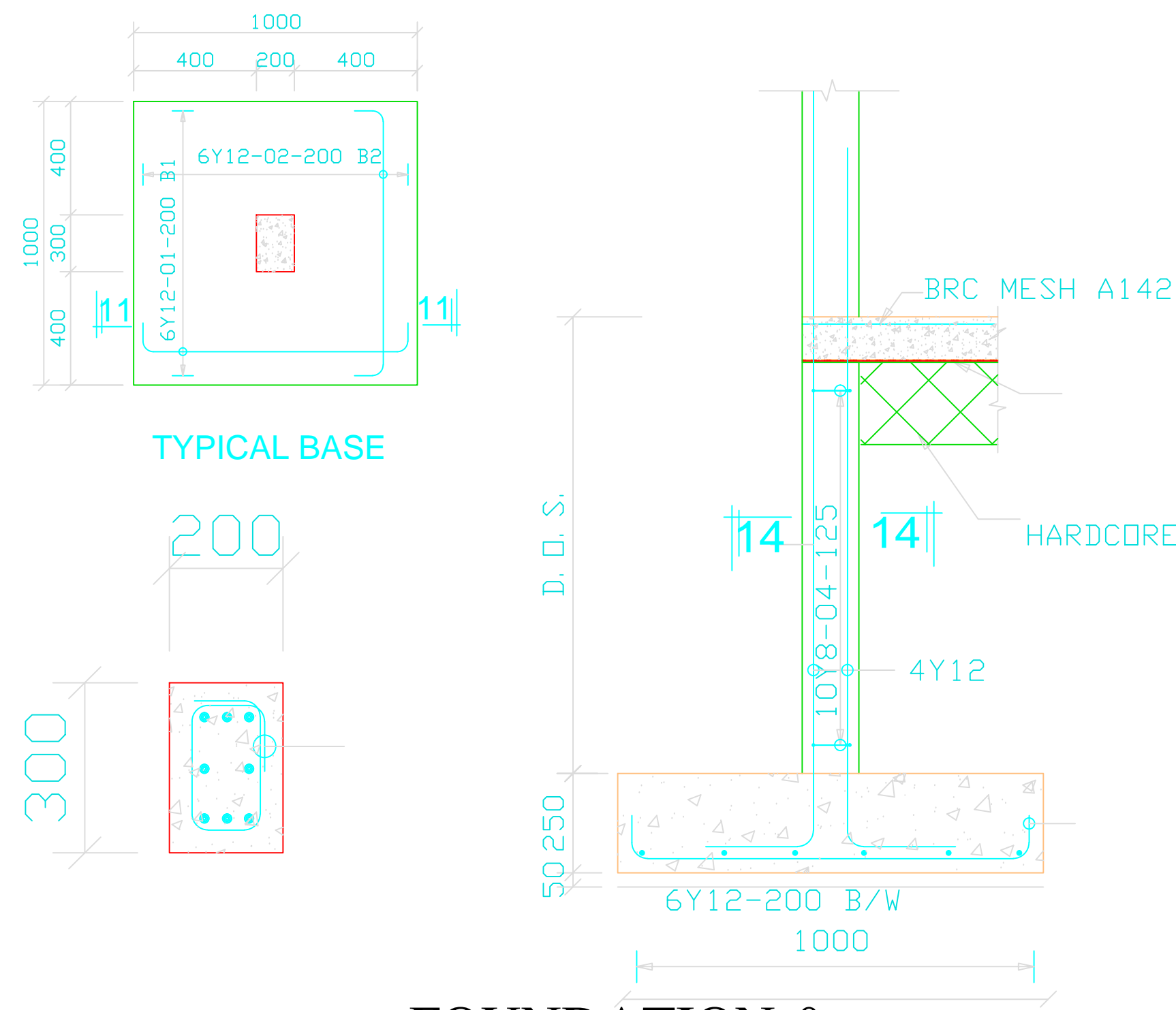
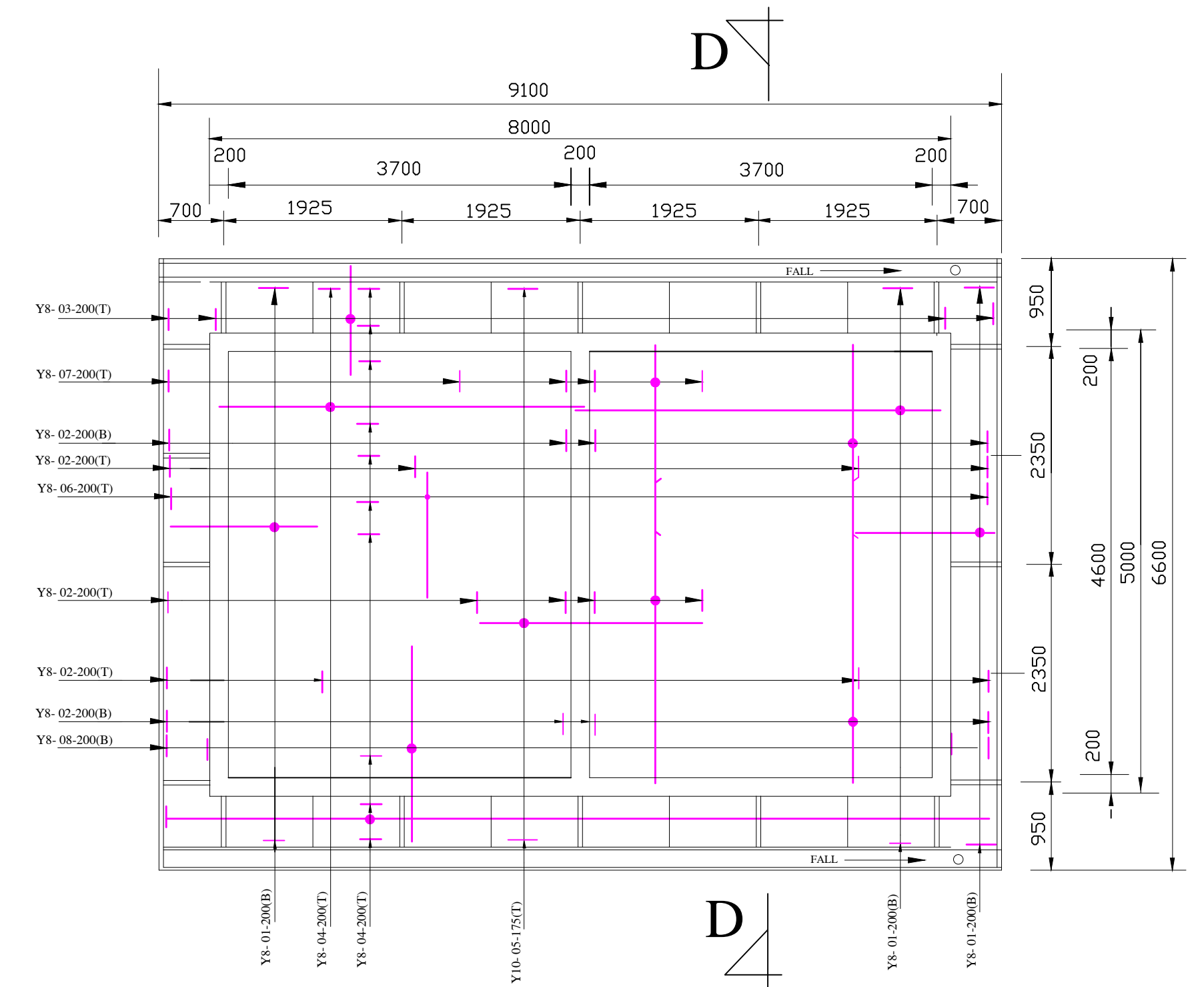


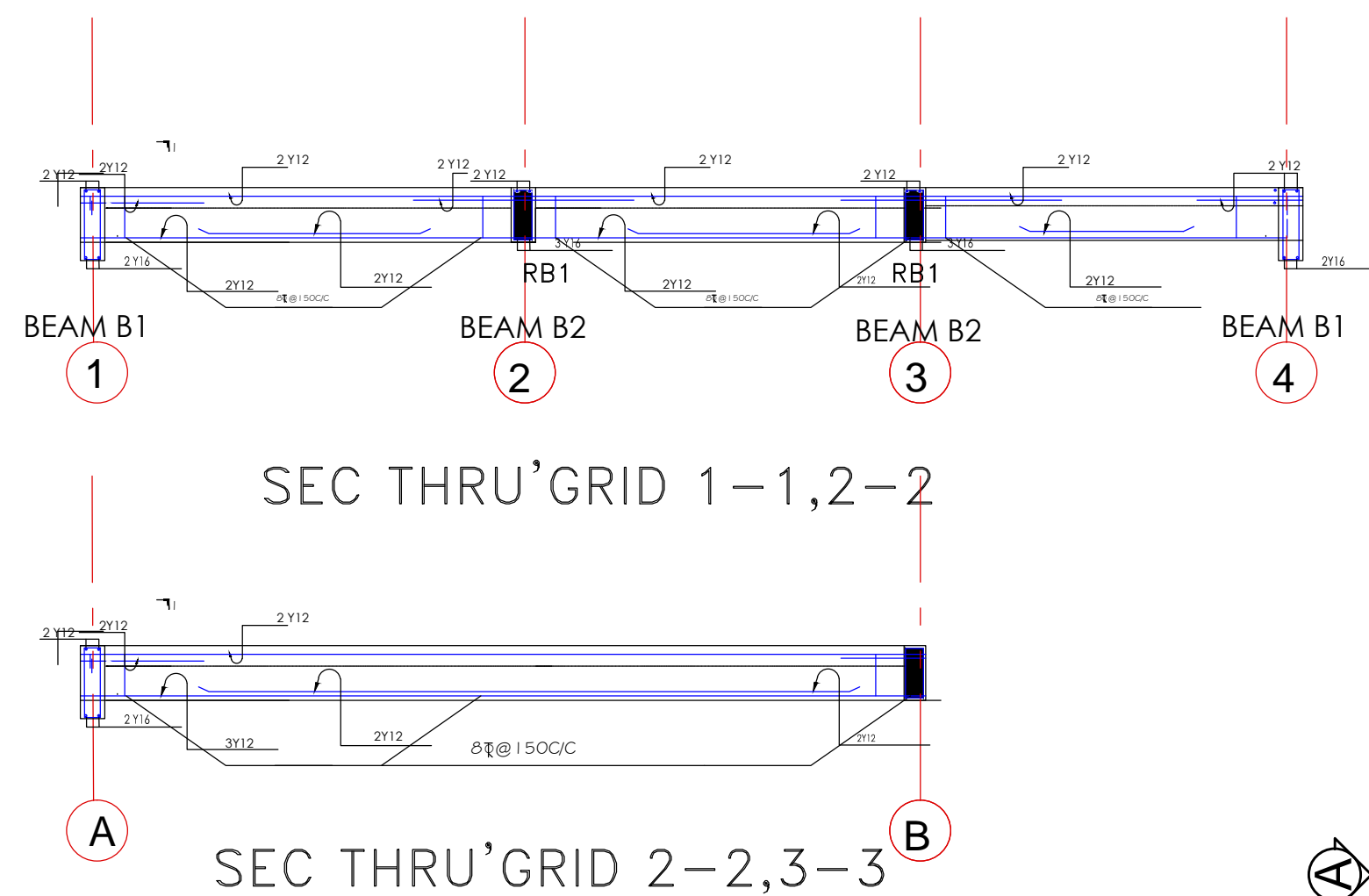
**FOUNDATION LAYOUT**



**FOUNDATION & COLUMN DETAILS**

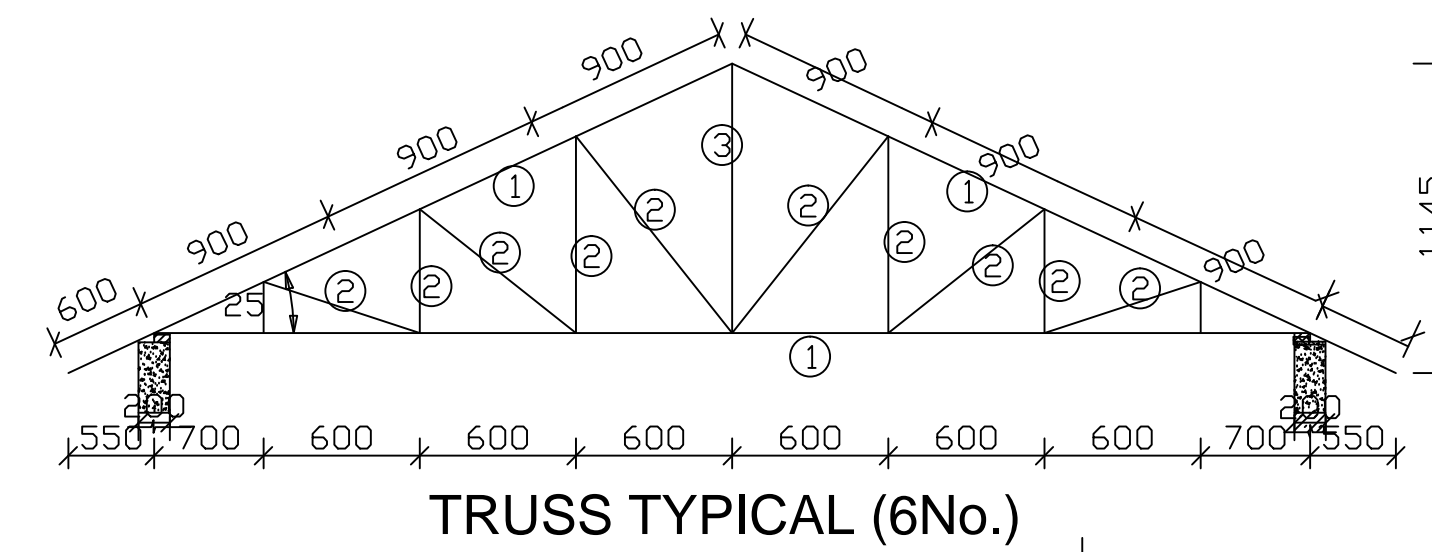


**ROOF SLAB PLAN**



**SEC THRU' GRID 1-1,2-2**

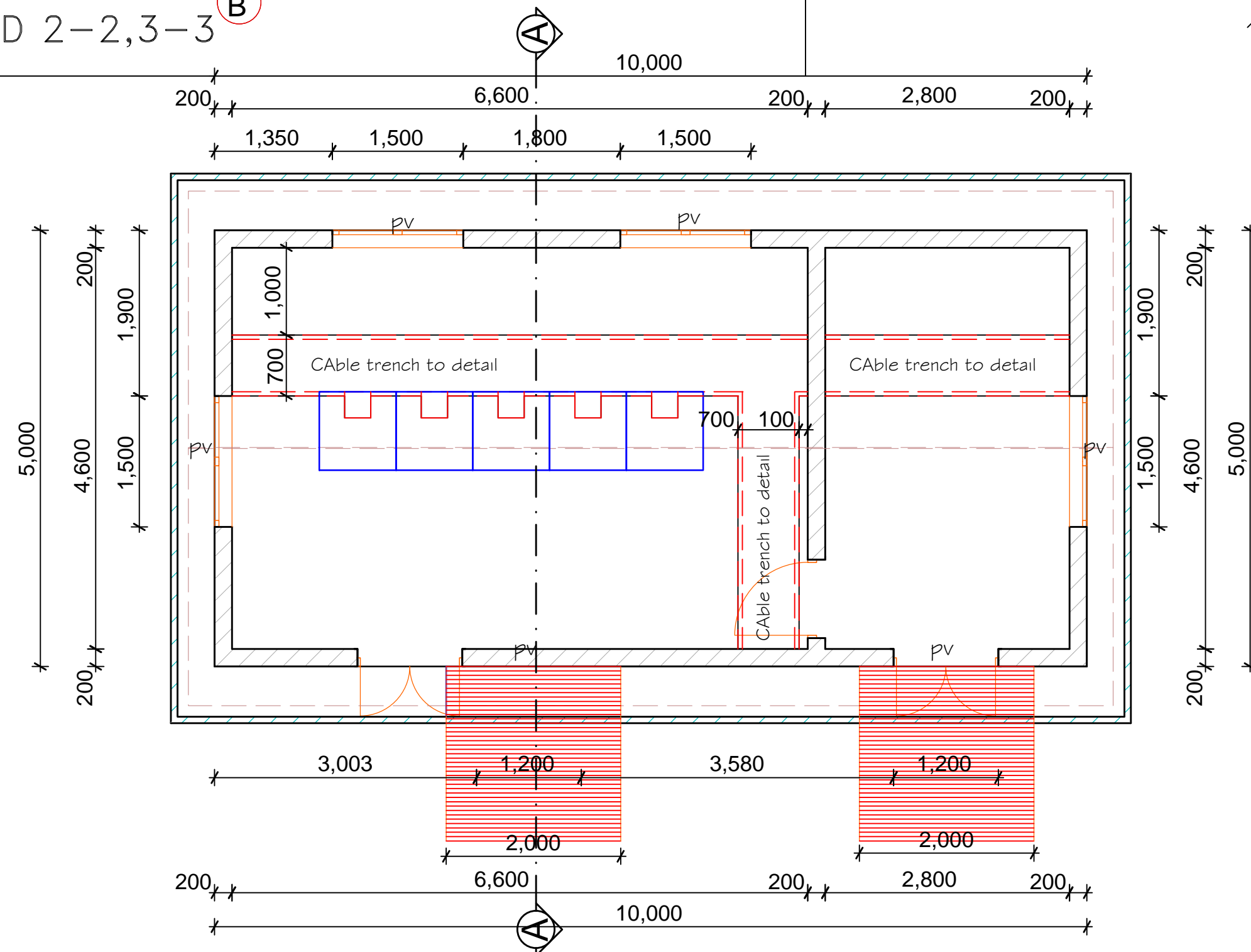
**SEC THRU' GRID 2-2,3-3**



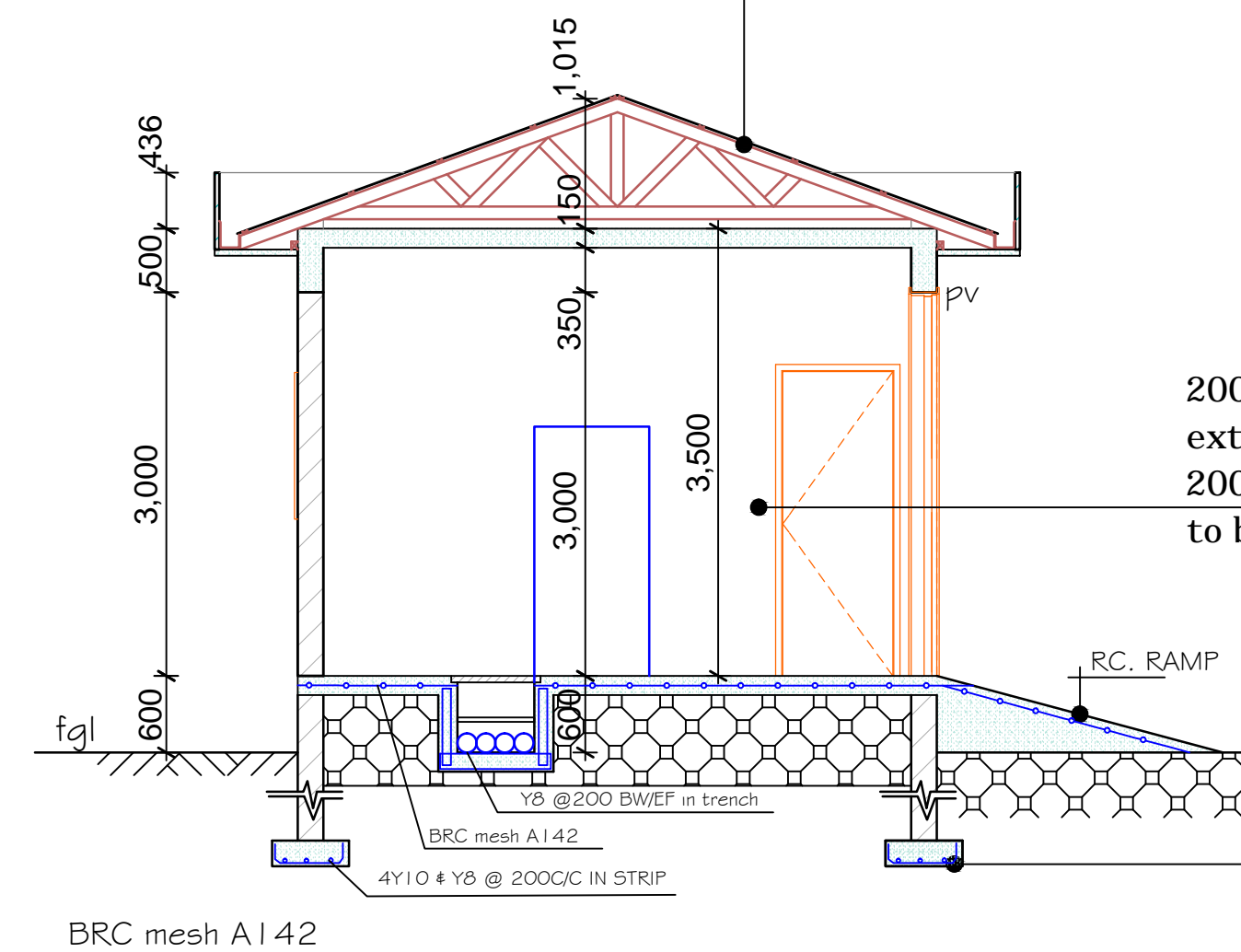
**TRUSS TYPICAL (6No.)**

**ROOFING SPECIFICATIONS**

20° angle, IT4 Pre-painted blue 26G roofing sheets on ZED purlins on 50 x 50x6mm steel trusses



**PROPOSED RCC DETAILS OF CONTROL BUILDING FOR 132,66 & 33KV METERING STN & 7.5MVA TX PRIMARY STN**



**WALLING**

200mm thick masonry stone walling well dressed external, plastered and painted to approval on the internal. 200mm thick foundation stone walling and depth to be determined on site.

**CONCRETE WORKS**

- i) 150mm thick reinforced conc. slab with reinforced ring beam to eng's details.
- ii) 250 mm thick base on 50mm blinding layer
- iii) 600 x 200mm mass conc. strip foundation to eng's details.

	NAME	DATE	SIGN
APPROVED CHIEF ENG.			
CHECKED CIVIL ENG.	D. MWANIKI		
CHECKED PRINCIPAL	L OBARO	24/09/2015	
DRAWN	J KAHARE	24/09/2015	J KAHARE

SCALE 1 : 50

SHEET 3/J

[KENYA POWER](#)

SK. No. 07734/A